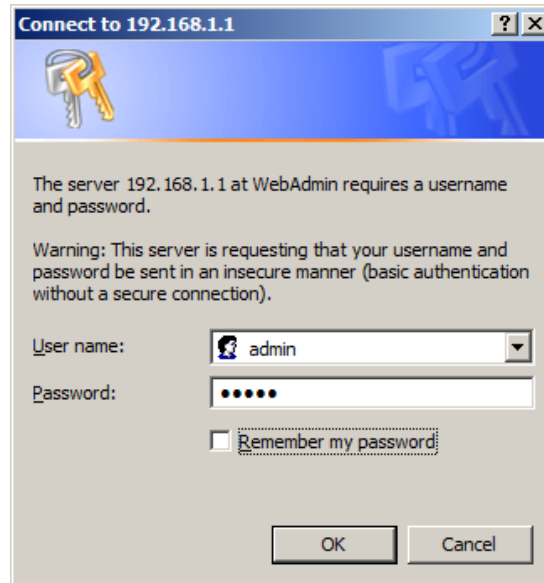
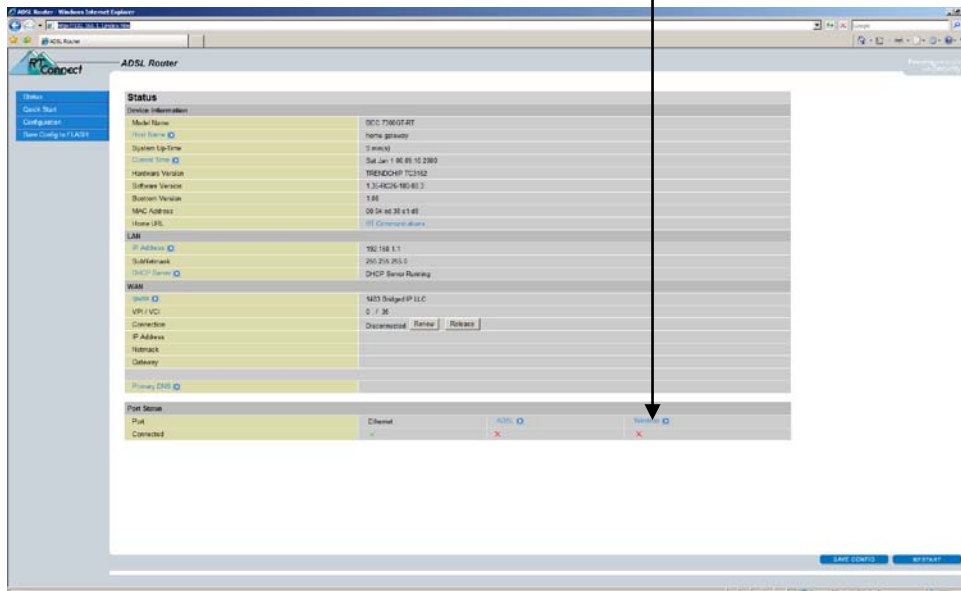


How to enable wireless for the BEC 7300GT

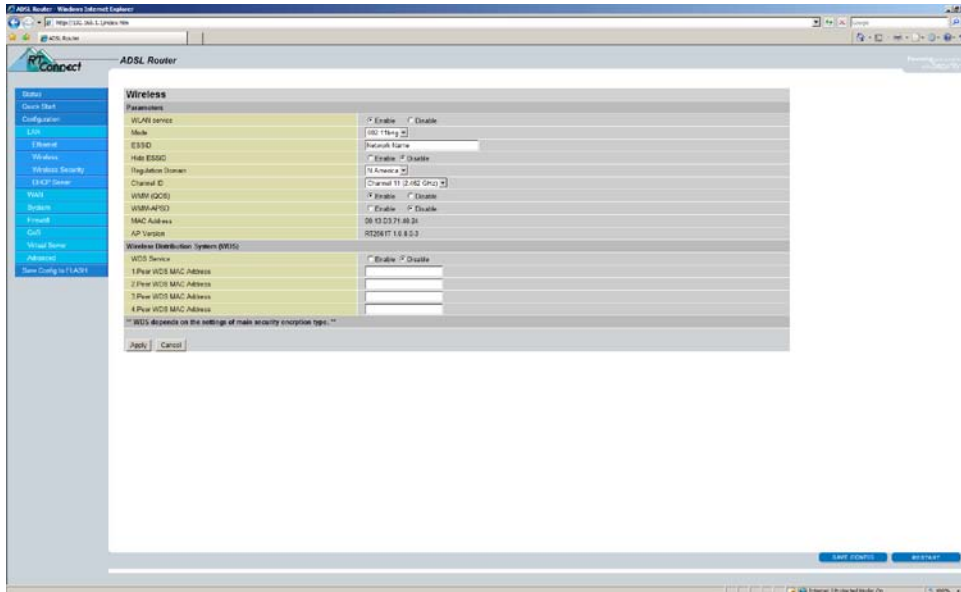
1. Log into router
 - a. Wired Connection
 - b. Web browser (Example: Internet Explorer)
 - i. <http://192.168.1.1>
 1. Username: admin
 2. Password: admin



2. Click on "Wireless" in bottom right corner

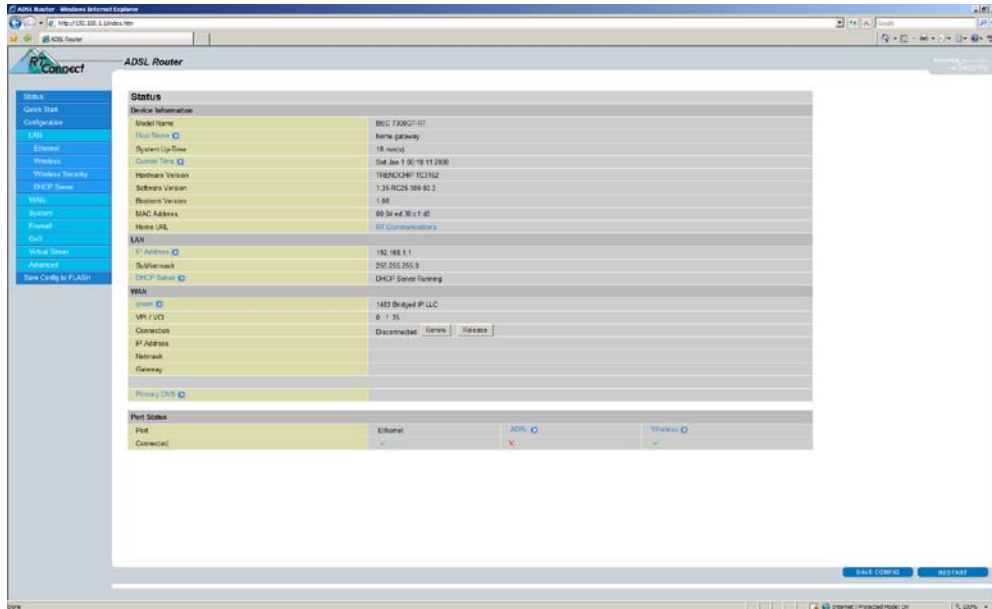


3. Wireless Settings



- a. WLAN service = Enable
 - b. Mode = whatever you want, but 802.11b+g (Default) is good
 - c. ESSID = whatever you would like your network to be called
 - i. This distinguishes your network from other wireless networks in your neighborhood
 - d. Hide ESSID = Disable
 - i. You can set this option to enable if you wish to hide your ESSID. If you do this you will have to manually set your network card to find your network. This is out of the scope of this tutorial and RT Connect does not support this.
 - e. Regulation Domain = N.America
 - f. Channel ID = 1 – 11
 - i. We have found that channel 1 seems to get a lot of interference for unknown reasons. Use any other channel in order to reduce interference. If you experience problems try to use another channel such as 9 or 11. If you find you are having signal issues or other wireless issues, you can log back into the router and change your wireless channel to see if this clears up your issue.
 - g. WMM (QOS) = Leave enabled
 - h. WMM-APSD = Leave Disabled
 - i. Wireless Distribution System (WDS) = Leave as is
4. Click Apply: Once the status bar at the bottom of your browser window shows "Done" then...
 5. Click Save Config to Flash on the left side of the screen
 6. Click Apply (Save Config to Flash – Write settings to FLASH)
 7. If you get a "Page Cannot Be Displayed" page, press F5 on your keyboard to refresh the screen

8. Make sure the check mark under "Wireless" is green



Wireless encryption

The BEC 7300GT has the ability to do wireless encryption for your network. **RT Communications does not install nor do they support wireless encryption for your network.** If you would like to add this functionality to your network, please reference the User's Manual at:

<http://www.rtconnect.net/docs/7300UserManual.pdf>

You will find instructions on wireless encryption on pages 39-41 of the manual.