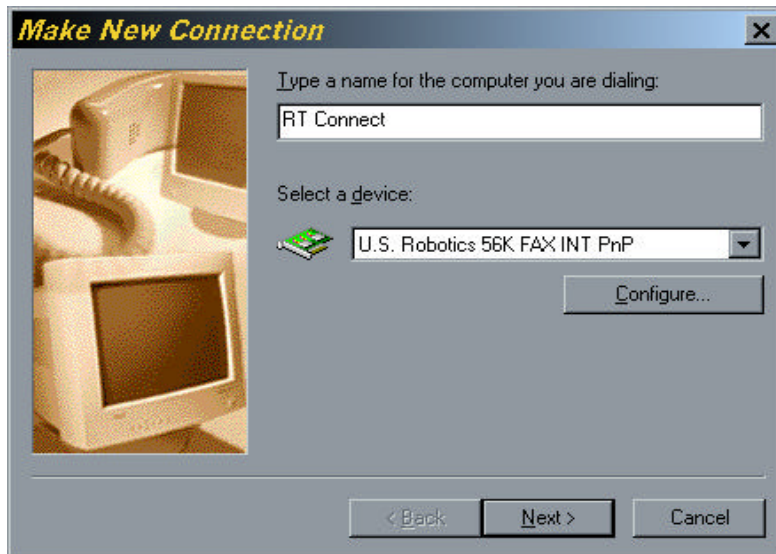


# RTConnect.Net SELF HELP INSTALLATION GUIDE

## Dial-Up for Windows ME

1. Turn on your computer
2. Click on **“Start”**
3. Click on **“Programs”**
4. Click on **“Accessories”**
5. Click on **“Communications”**
6. Click on **“Dial-Up Networking”**
7. Click on **“Create New Connection”**
8. Type **“RT Connect”** in location labeled **“Type a name for the computer you are dialing:”**

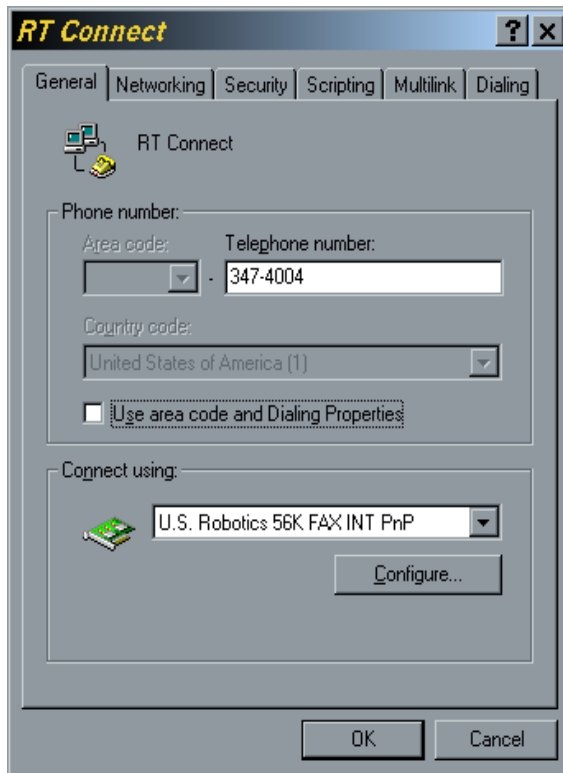


9. Click the **“Next”** button
10. Type **xxx-xxxx** in the location labeled **“Telephone Number”** Look at the table on the last page to get your Dial-Up number. Do Not Enter an Area Code.

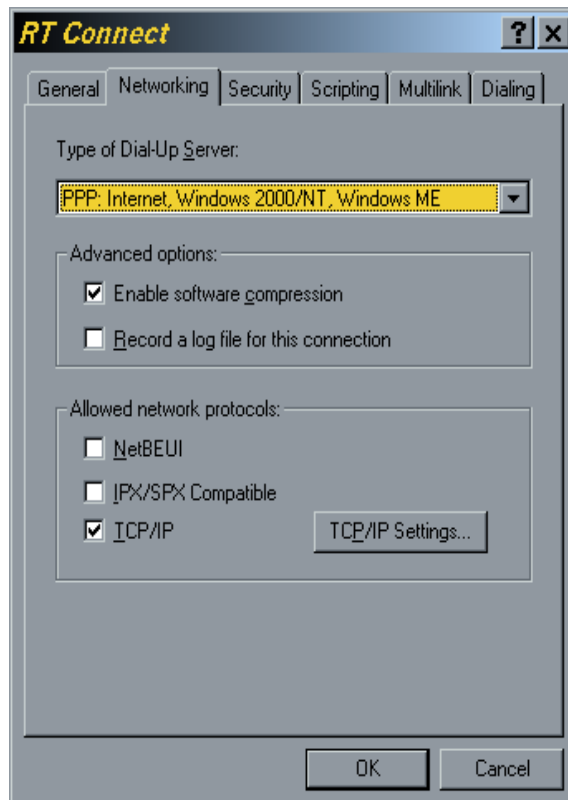


11. Click the **“Next”** button
12. Click the **“Finish”** button

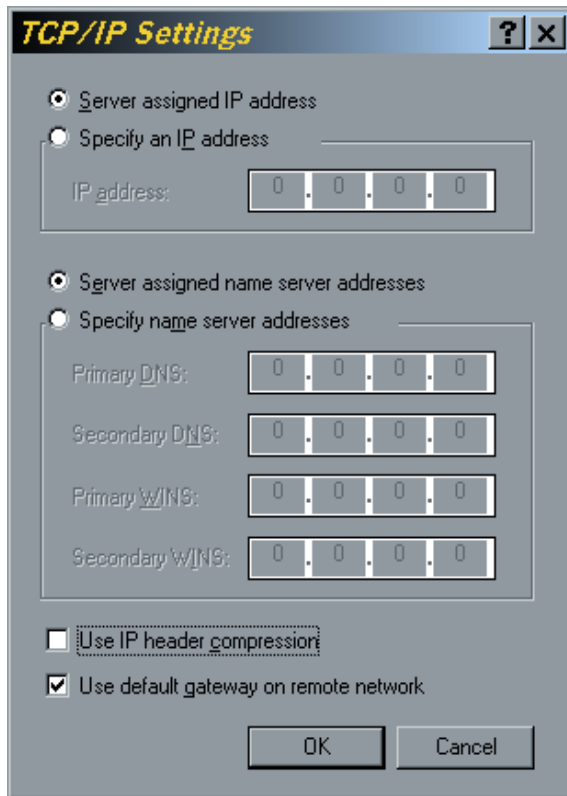
13. Right Click on “**RT Connect**” Connection
14. Click on “**Properties**”
15. Uncheck “**Use area code and Dialing Properties**”



16. Click on the “**Networking**” Tab
17. Under the “Advanced Option”\*: The only thing that should be checked is “**Enable Software Compression**”

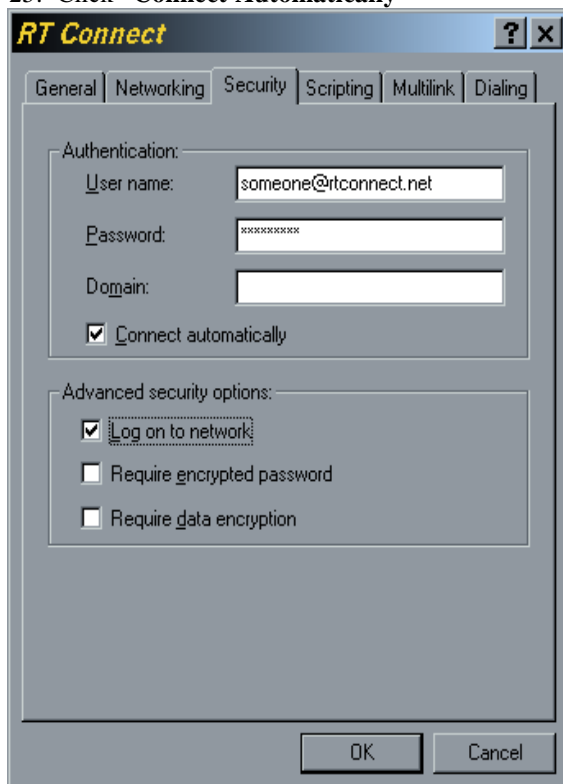


18. Under “Allowed network protocols”: The only thing that should be checked is “**TCP/IP**”
19. Click on the “**TCP/IP Settings**” button
20. Uncheck “**Use IP header compression**” – Leave everything else the way it is.



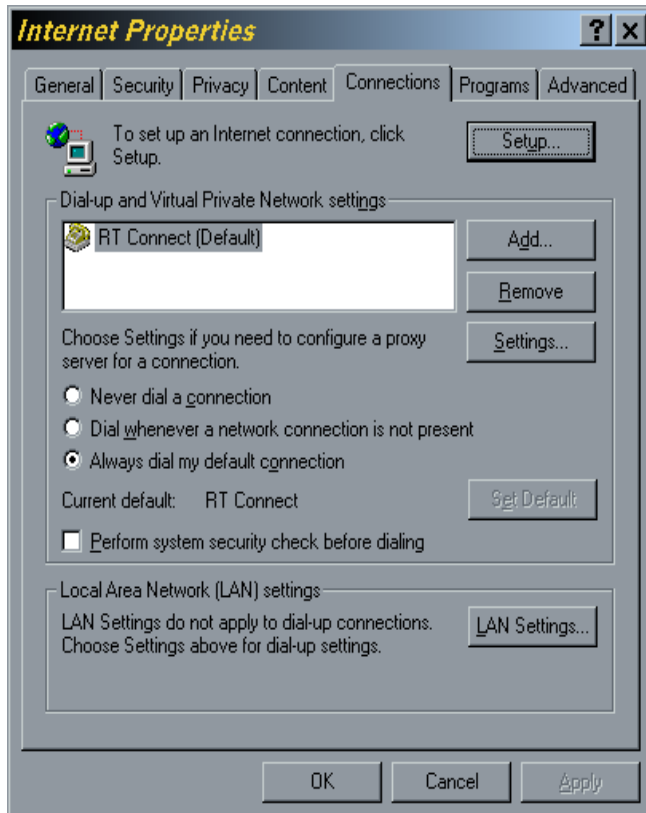
The screenshot shows the "TCP/IP Settings" dialog box. It has a title bar with a question mark and a close button. The dialog is divided into several sections. The first section has two radio buttons: "Server assigned IP address" (selected) and "Specify an IP address". Below the second radio button is a text box labeled "IP address:" containing "0.0.0.0". The second section has two radio buttons: "Server assigned name server addresses" (selected) and "Specify name server addresses". Below the second radio button are four text boxes: "Primary DNS:" (0.0.0.0), "Secondary DNS:" (0.0.0.0), "Primary WINS:" (0.0.0.0), and "Secondary WINS:" (0.0.0.0). The third section has two checkboxes: "Use IP header compression" (unchecked) and "Use default gateway on remote network" (checked). At the bottom are "OK" and "Cancel" buttons.

21. Click on the “**OK**” button
22. Click on the “**Security**” tab
23. From your “User Data Sheet” type in your email address in the location labeled “**User name**”
24. From your “User Data Sheet” type in your password in the location labeled “**Password**”
25. Click “**Connect Automatically**”



The screenshot shows the "RT Connect" dialog box with the "Security" tab selected. The title bar has a question mark and a close button. The dialog has several tabs: "General", "Networking", "Security" (selected), "Scripting", "Multilink", and "Dialing". The "Authentication" section has three text boxes: "User name:" (someone@rtconnect.net), "Password:" (masked with asterisks), and "Domain:". Below these is a checked checkbox for "Connect automatically". The "Advanced security options" section has three checkboxes: "Log on to network" (checked), "Require encrypted password" (unchecked), and "Require data encryption" (unchecked). At the bottom are "OK" and "Cancel" buttons.

26. Click **“Log on to Network”**
27. Click the **“OK”** button
28. Close the **“Dial-Up Networking”** window
29. Click the **“Start”** button
30. Click on **“Settings”**
31. Click on **“Control Panel”**
32. Double Click on **“Internet Options”**
33. Click on the **“Connection”** tab
34. Click on **“Always Dial My Default Connection”**
35. Click on **“RT Connect”** once
36. Click on the **“Set Default”** button



37. Click the **“OK”** button
  38. Close the **“Control Panel”**
- And finally double click **“The Internet”** icon from your Desktop and happy surfing...

RTConnect.net Dial-Up Numbers:

TOWN	NUMBER
ALVA, ALADDIN	307-468-9810
DEVILS TOWER, NEW HAVEN	307-467-9810
FOUR CORNERS	307-746-9810
GAS HILLS	307-457-4004
HULETT, OSHOTO	307-467-9810
JEFFREY CITY	307-544-4004
KIRBY	307-864-9810
MOORCROFT	307-756-9810
NEWCASTLE	307-746-9810
OSAGE	307-746-9810
PINEHAVEN, CARLILE	307-756-9810
SHOSHONI	307-876-9271
THERMOPOLIS	307-864-9810
UPTON	307-468-9810
WORLAND	307-347-4004