

Dial up setup for Mac OS v.8.1.1, 8.5, 8.5.1, 8.6, 9.0, 9.1, 9.2

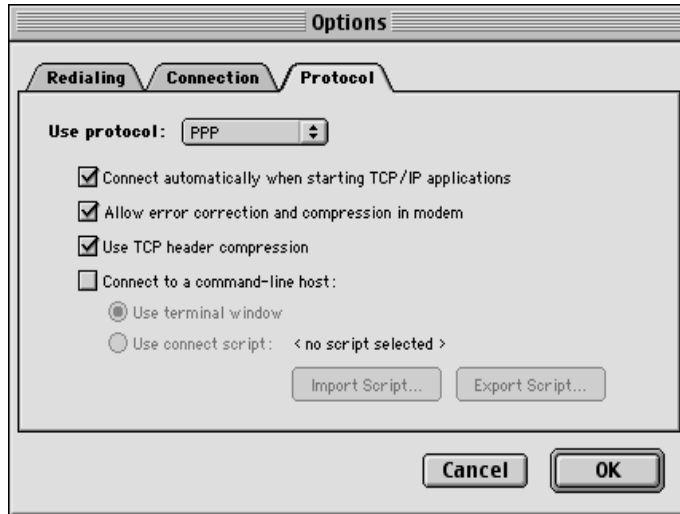
1. From the **Apple** menu, click **Control Panels**, and choose **Remote Access**.



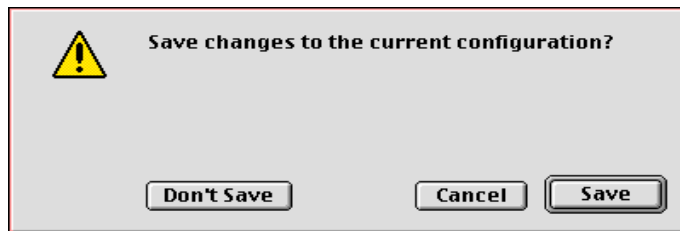
2. In the **Name** box, type your full email address (e.g., username@rtconnect.net).
3. In the **Password** box, type your password.
4. Check the box next to **Save password**.
5. In the **Number** box, type your local access number.
6. Click the **Options** button.



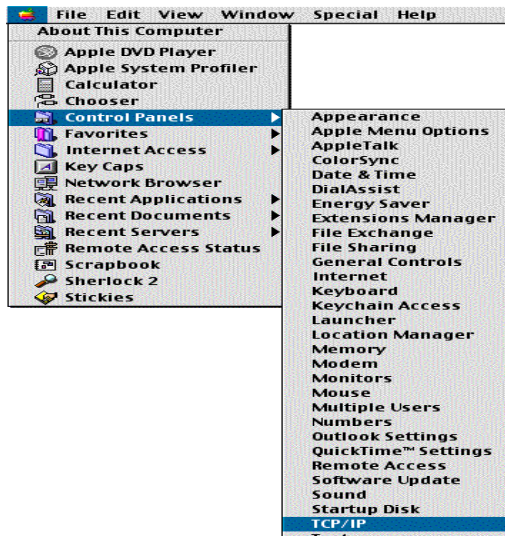
7. Click on the **Protocol** tab.
8. Click the arrow box on the **Use Protocol** pop-up list and choose **PPP**.
9. Check the box next to **Connect automatically when starting TCP/IP applications**.
10. Check the box next to **Allow error correction and compression in modem**.
11. Check the box next to **Use TCP header compression**.
12. Click the **OK** button.



13. Close the **Remote Access** window.
14. Click the **Save** button.



15. From the **Apple** menu, click **Control Panel**, and choose **TCP/IP**.



16. Click the arrow box on the **Connect via** pop-up list and choose **PPP**.
17. Click the arrow box on the **Configure** pop-up list and choose **Using PPP Server**.
18. In the name server addr box input the following IP addresses: 72.36.0.5 and 64.251.173.134
19. Close the **TCP/IP** window.
20. Click the **Save** button.

