

RTConnect.Net Self Help Installation Guide

Macintosh Computer OS/X

Before you begin computer setup:

Remove ADSL Modem from package and lay it and all other components out so they may be easily retrieved.

You should have the following:

- DSL Modem
- Power Cord
- Phone Cable
- Ethernet Cable

Place the modem in a location that will allow all attachments to reach the back of your computer as well as be easily accessible to you.

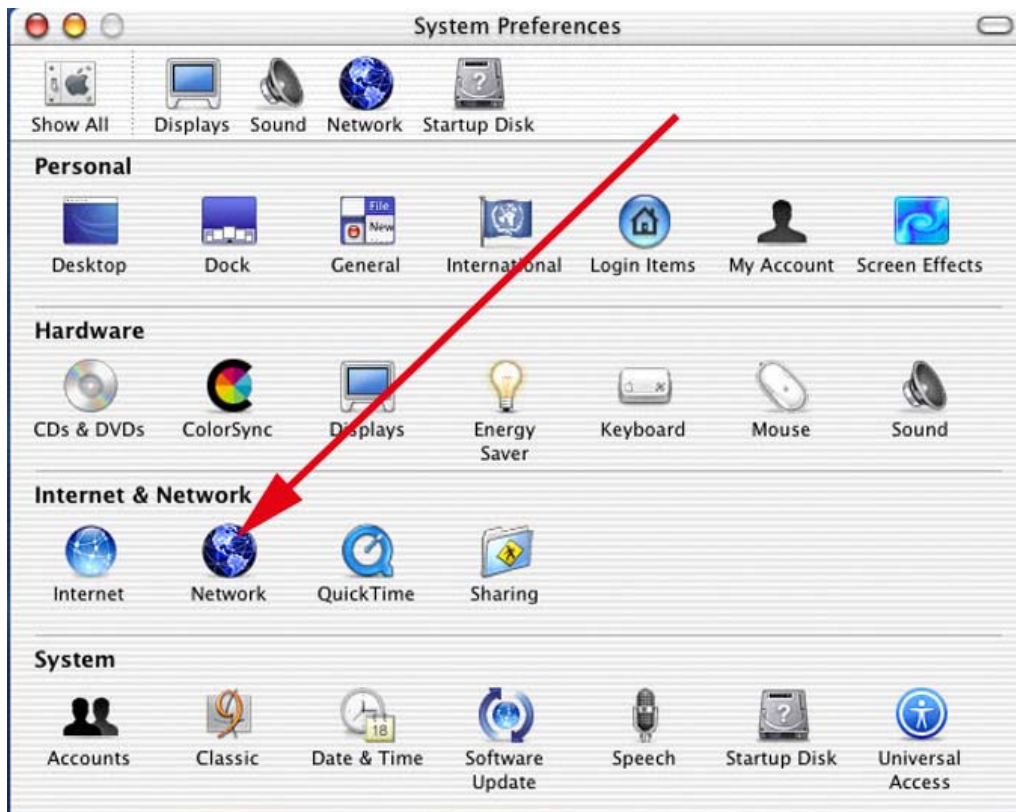
1. Plug power cord into a standard 120V electric receptacle or power strip/surge protector.
2. Plug the other end of the power cord into the appropriate location on the back of the Modem.
3. Plug the telephone cable into the wall jack.
4. Place the other end of the telephone cable into the receptacle on the back of the modem labeled "LINE" or "ADSL."
5. Plug the Ethernet cable into your Network Interface Card (NIC)/Ethernet Port (Oversized phone jack on back of computer).
If you are unsure as to whether or not you have a NIC card, refer to your computer's user guide for additional information.
6. Plug the other end of the Ethernet cable into the receptacle on the back of the modem labeled "ENET" or "ETHERNET" or "10/100 Base-T."

Now you are ready to begin configuration of your computer.

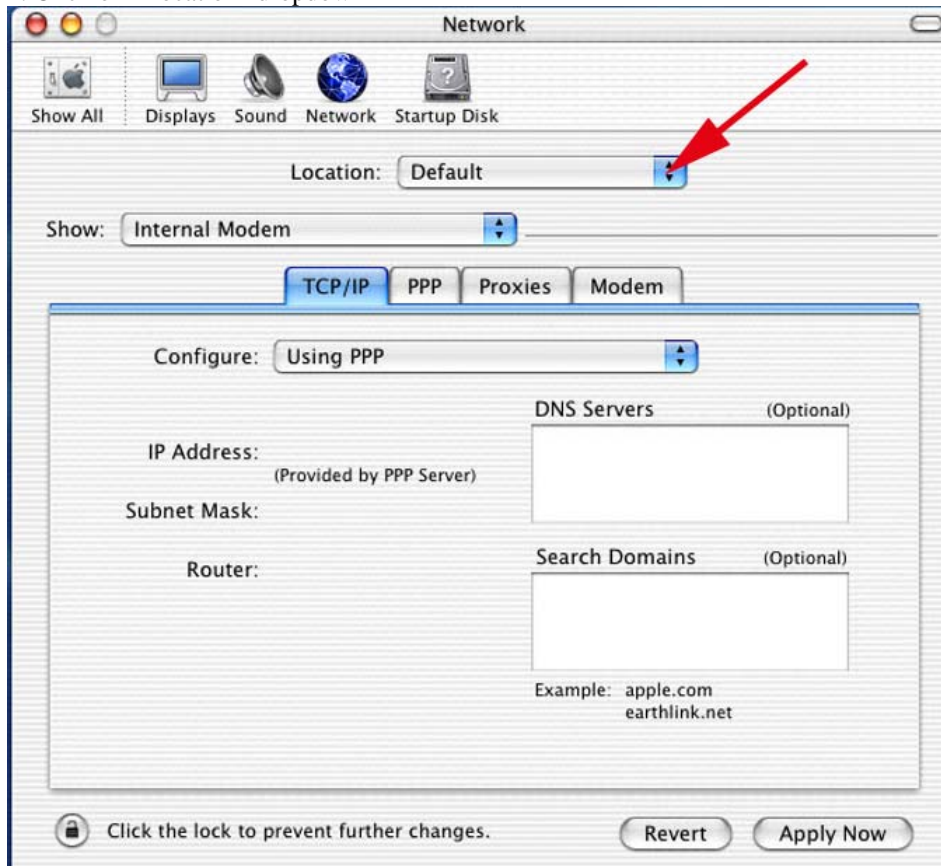
1. Turn on your computer
2. Click on "System Preferences"



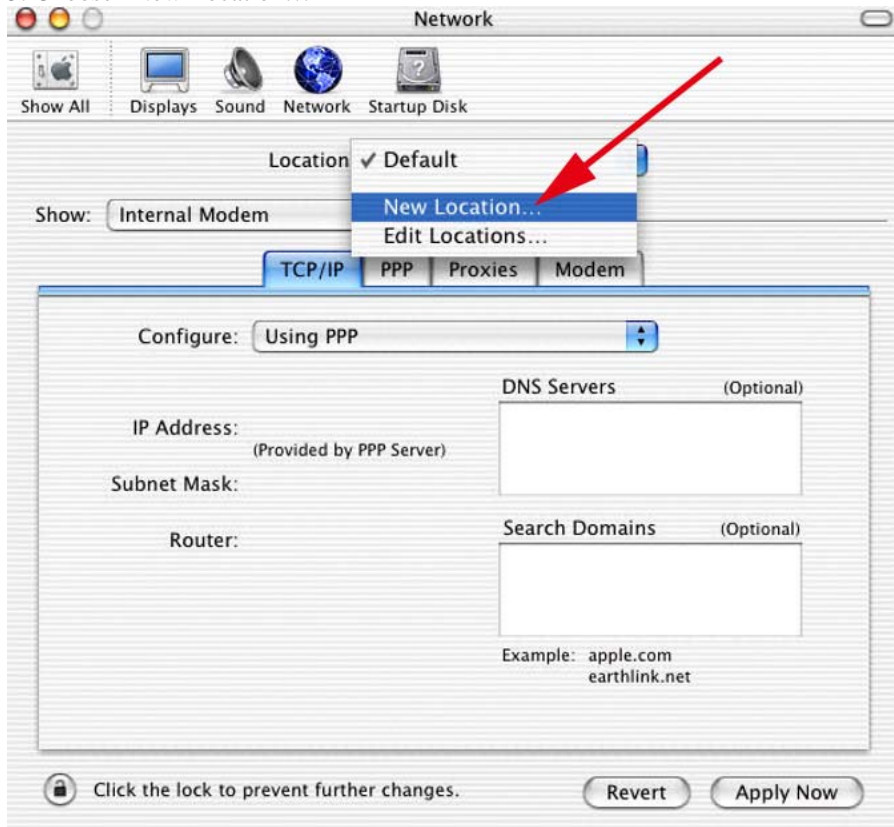
3. Click on "Network"



4. Click on "Location" dropdown



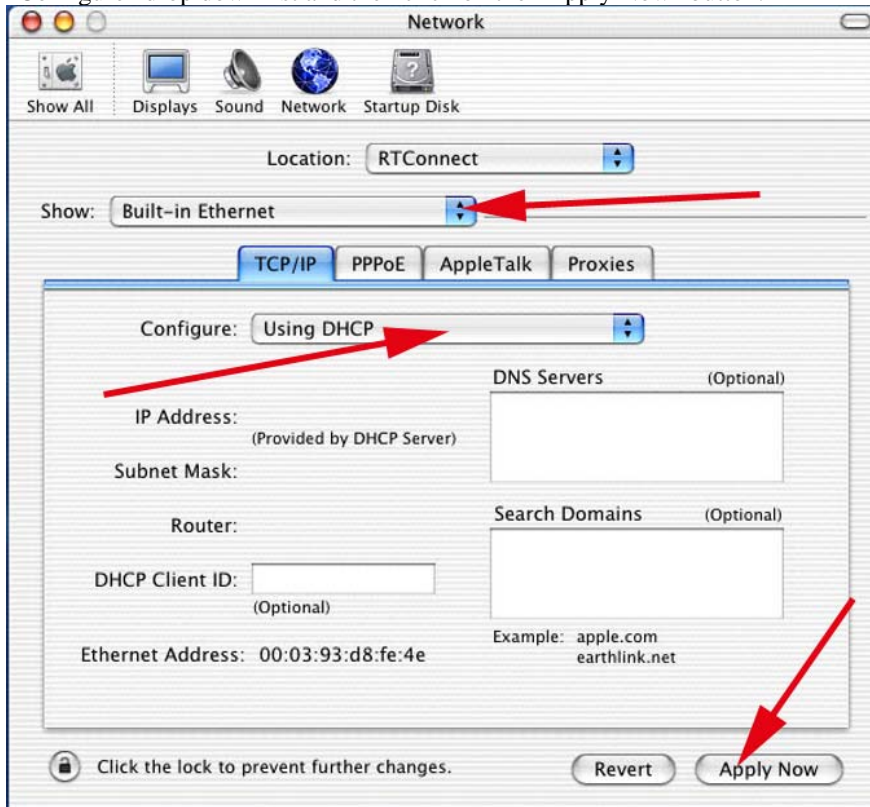
5. Choose “New Location...”



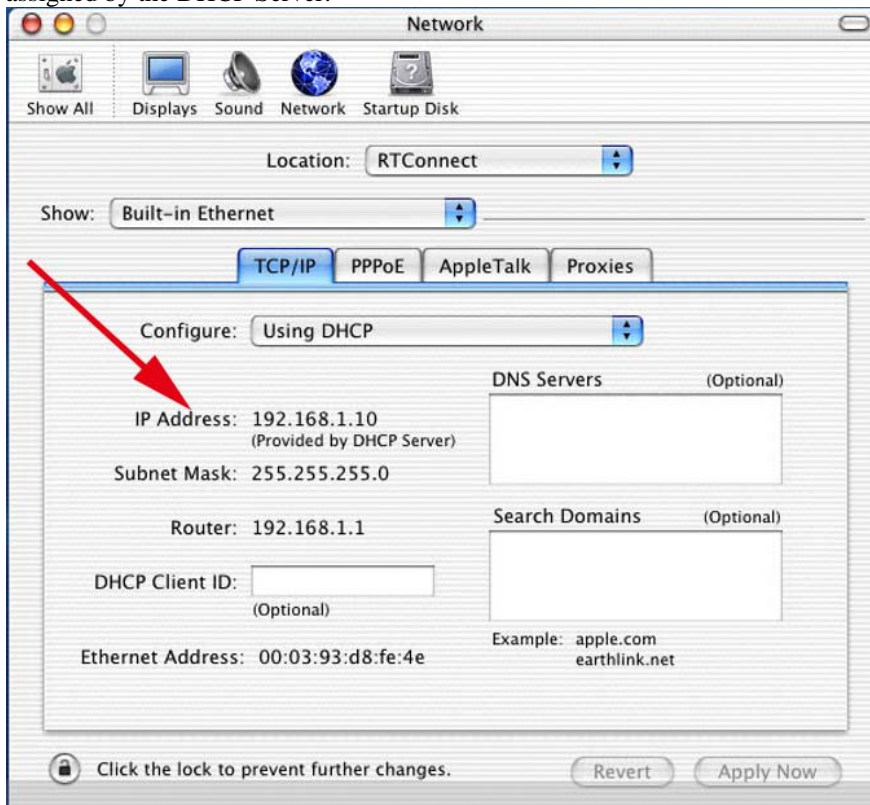
6. Type in a name for you new location. You will use this to identify your RT Connect ADSL connection. You can create additional connections to use with other networks and easily change to and from your RT Connect ADSL connection to these other connections, e.g., your company network where your work.



7. Select “Built-in Ethernet” in the “Show” drop down list. On the TCP/IP tab select “Using DHCP” from the “Configure” drop down list and then click on the “Apply Now” button.



8. It might take a few moments, but after clicking on the “Apply Now” button you should see an “IP Address” assigned by the DHCP Server.



9. You are now ready to surf the Internet using your RT Connect high speed DSL connection!