

Windows Vista Setup

Before you begin computer setup:

Remove ADSL Modem\Router from package and lay it and all other components out so they may be easily retrieved.

You should have the following:

- DSL Modem/Router
- Power Cord
- Phone Cable
- Ethernet Cable

Place the modem in a location that will allow all attachments to reach the back of your computer as well as be easily accessible to you.

1. Plug power cord into a standard 120V electric receptacle or power strip/surge protector.
2. Plug the other end of the power cord into the appropriate location on the back of the Modem and turn modem on.
3. Plug the telephone cable into the wall jack.
4. Place the other end of the telephone cable into the receptacle on the back of the modem labeled "LINE" or "ADSL."
5. Plug the Ethernet cable into your Network Interface Card (NIC)/Ethernet Port (Oversized phone jack on back of computer). If you are unsure as to whether or not you have a NIC card, refer to your computer's user guide for additional information.
6. Plug the other end of the Ethernet cable into one of the Ethernet ports on the back of the modem/router.

Now you are ready to begin configuration of your computer.

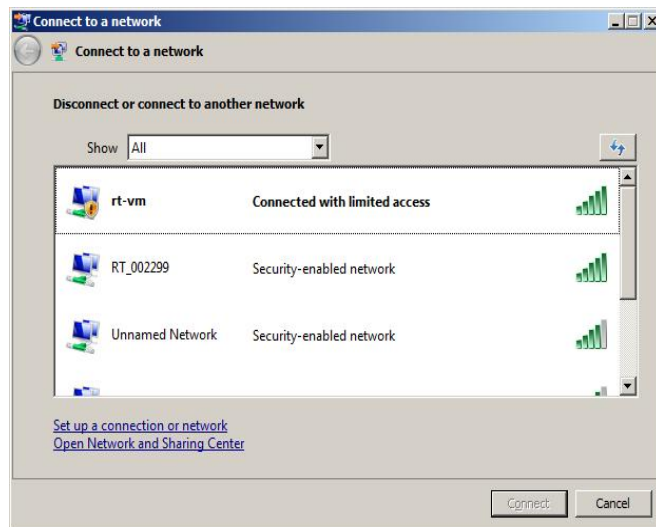
1. Right click on the two computers located by clock.



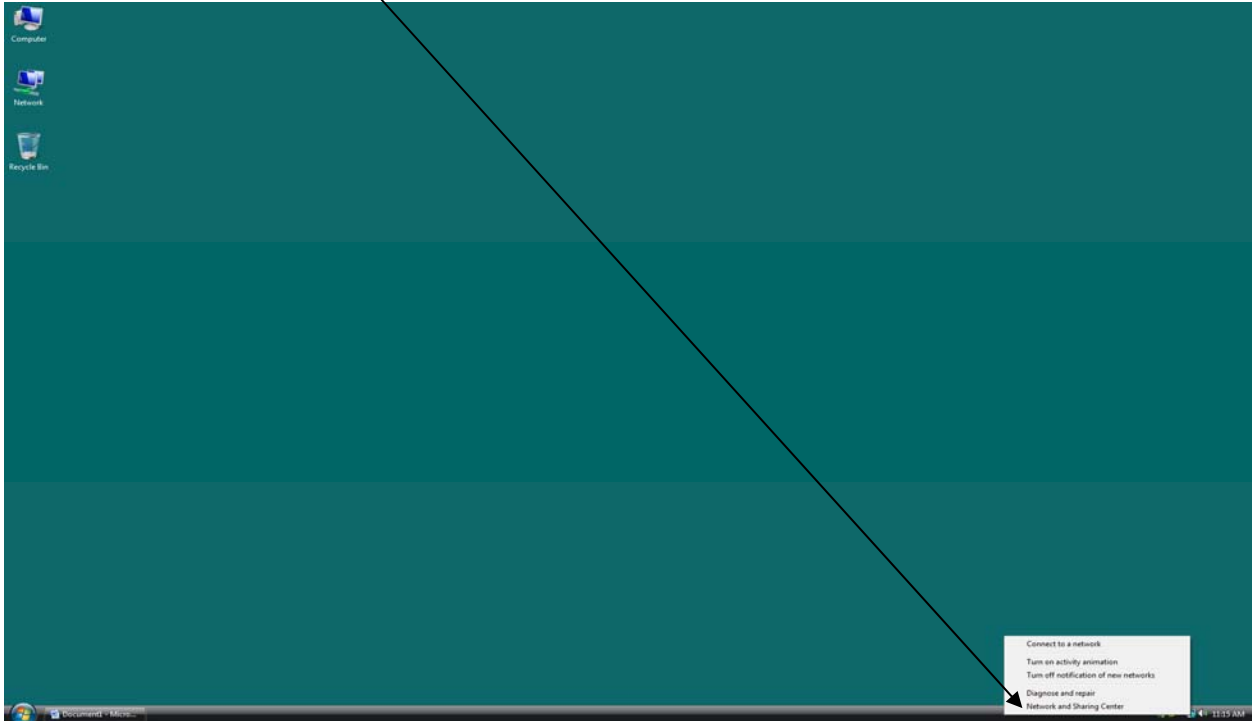
2. To connect to wireless (If enabled on your router) select connect to network to get list of available wireless networks.



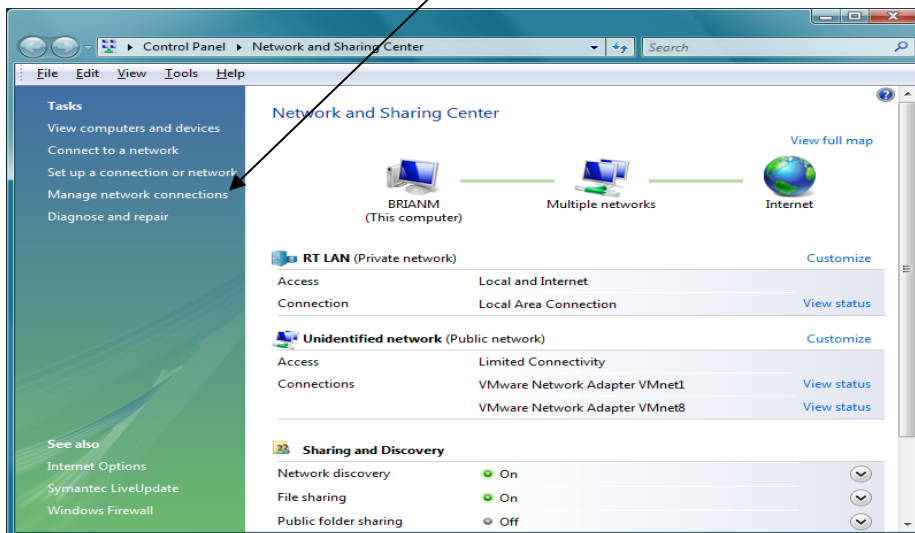
3. To connect to network
 - a. Highlight network you wish to connect to and click the connect button at the bottom of box.
 - b. Double click on network you wish to connect to



4. To modify properties of your network card or wireless card select "Network and Sharing Center".



5. Click on "Manage network connections"



- Right click on any network adapter that you wish to change properties and make changes from this screen.

