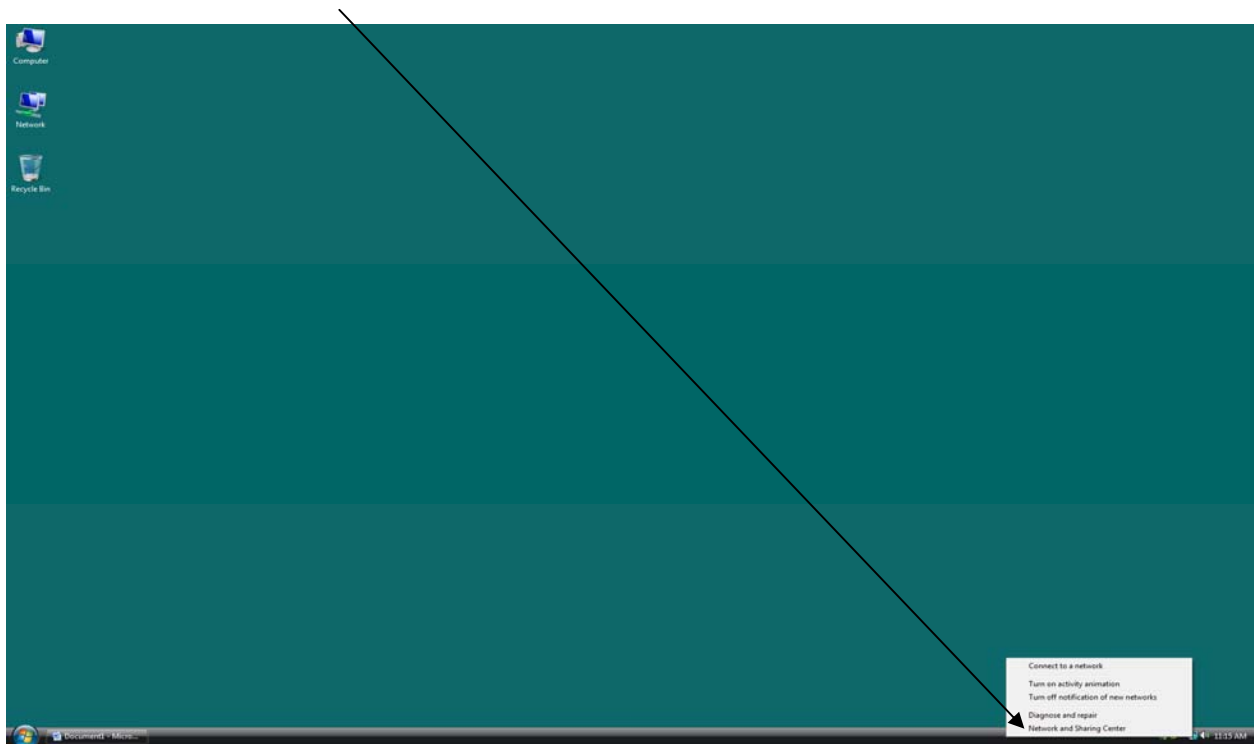


Windows Vista Dial-up Setup

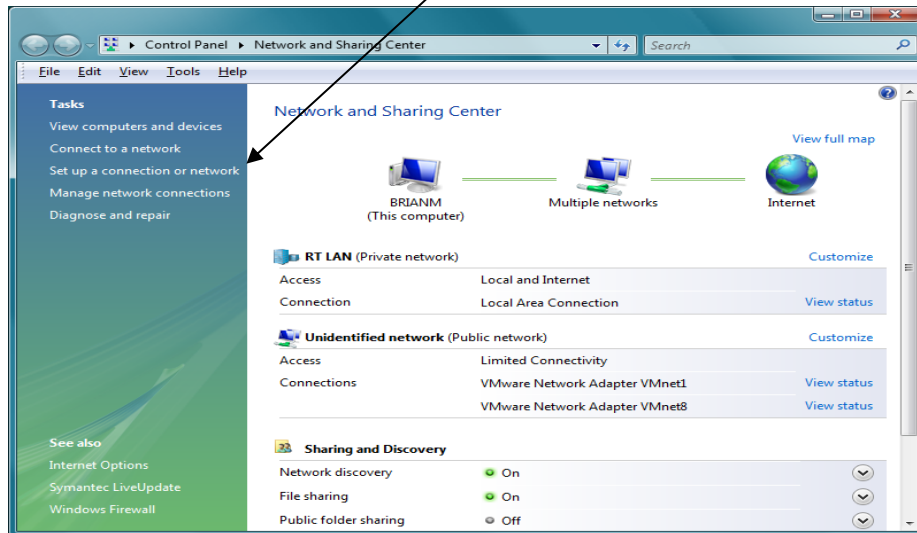
1. Right click on the two computers located by clock.



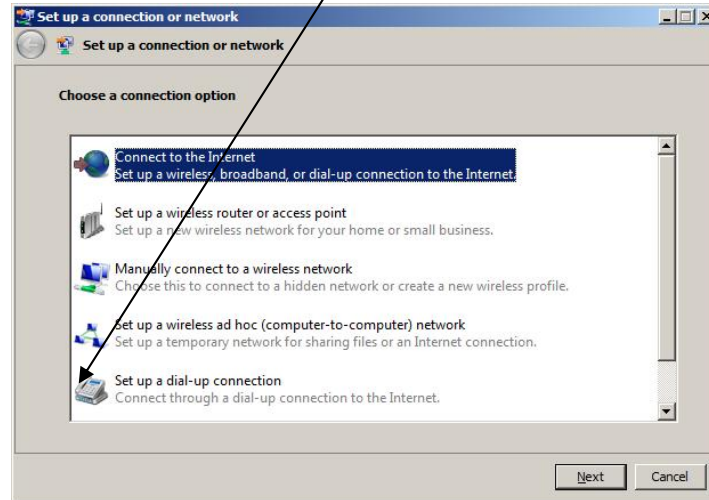
2. To add a dial-up connection click on "Network and Sharing Center".



3. Click "Set up a connection or network"

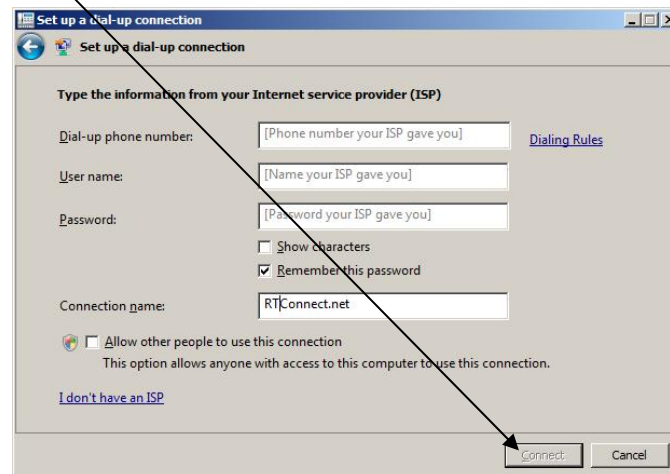


4. Select "Set up a dial-up connection"

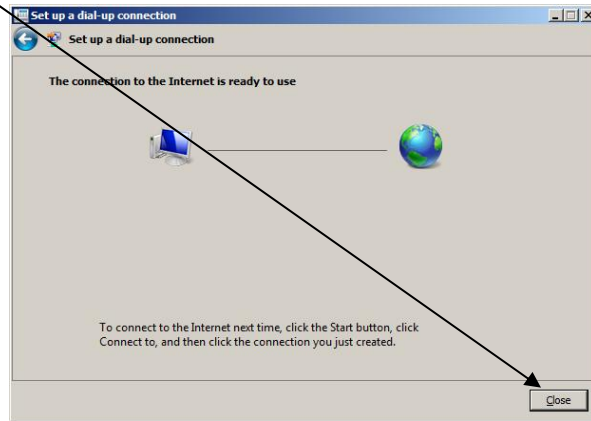


5. Input the following information that was provided by RTConnect.net
 - a. Dial-up phone number: *Area specific*
 - b. User name: *User Specific*
 - c. Password: *User Specific*
 - d. Check the "Remember this password"
 - e. Connection name: **RTConnect.net**

6. Click "Connect"



7. Click "Close"



8. Right click RTConnect.net to get to properties of dial-up connection. You can create a shortcut to desktop if you would like to have an icon for your dial-up.

